



# MASTERLINE 10 - WINDOW

## BIM MODELS

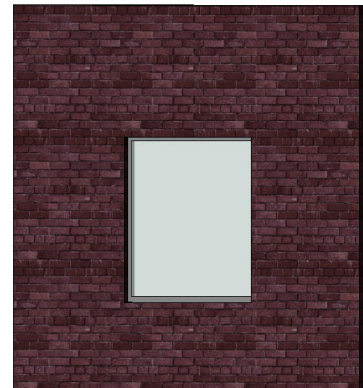


# MASTERLINE 10 WINDOW – BIM MODELS

Building Information Modelling (BIM) is an intelligent 3D model-based process where building information is shared between all members involved in the building process. AEC professionals like architects, engineers, general contractors and fabricators use BIM to plan, design, construct and build in a more efficient way. Architects can use the Reynaers BIM models from the start of the conceptual design stage, for better visualization, all the way to the realisation of the building, generating window schedules with detailed info on the used elements.

The Reynaers BIM models are completely parametric and include different design types, building connections and optional add-ons such as sills and shutters.

All models are downloadable on the Reynaers architect website and the website of Bimobject.



On the next sheets, it's possible to find the guidelines for using the Reynaers BIM-models.

MASTERLINE 10 - WINDOW	
Thermal insulation	$U_f = 0.9 \text{ W/m}^2\text{K}$ for 119mm, it depends on the frame/vent combination and glazing thickness
Air tightness	Up to 600 Pa (Class 4)
Water tightness	Up to 900 Pa (Class E900)
Wind load resistance	Up to 2000 Pa (Class 5)
Acoustic performance	$RW (C; C_{tr}) = 46 (-1; -4) \text{ dB}$ , depending on the glazing type
Burglar resistance	Up to RC 2/RC 3 (WK 2/WK 3)

## WINDOW

### 4 MODELS

- Fixed window, Single Vent
- Inward Opening, Single Vent
- Inward Opening, Double Vent
- Inward Opening, Combined Window

Download:



### OPTIONS INSIDE THE MODEL

#### BUILDING CONNECTION

- Type A: Netherlands
- Type B: Belgium
- Type C: International

#### CLOSING DOUBLE WINDOW

- Double Casement

#### DESIGN VARIANTS

- Functional
- Functional with Block Frame Straight
- Functional with block Frame Slanted
- Déco
- Renaissance

#### DIMENSIONS

- Height and width element
- Visible width frame
- Visible width vent
- Panel thickness
- Handle height
- Shutter roll height

#### FEATURES

- Shutter
- Sill

#### OPENING DIRECTION

- DIN R
- DIN L
- Tilt

#### MATERIALS

- Color inside/outside profile
- Panel material
- Shutter roll material

#### ENERGY ANALYSIS

- Standard
- HI
- HI+

#### ANALYTICAL PARAMETERS

- Information parameters similar to information on website

#### Level of detail

- Coarse/medium/fine

# DIMENSION PARAMETERS

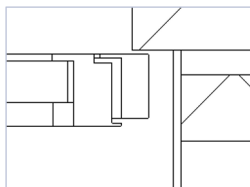
## General parameters

- Height EXT: Visible opening in outside wall
- Width EXT: Visible opening in outside wall
- Wall exterior width: Distance between front of the outer wall and front of the window (default 95mm)

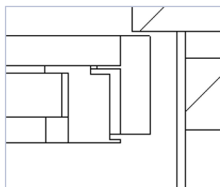
## Vent/Frame Parameters

- REY Frame: Visible width of the frame
  - The possible dimensions for every design variant are given
- REY Vent: Visible width of the vent
  - The possible dimensions for every design variant are given

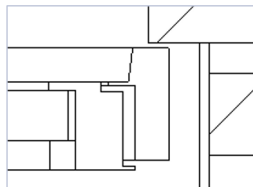
## Design Variant



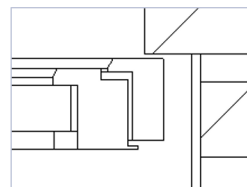
FUNCTIONAL



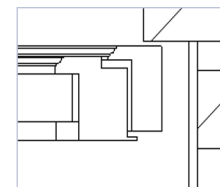
FUNCTIONAL  
WITH BLOCK-  
FRAME STRAIGHT



FUNCTIONAL  
WITH BLOCK-  
FRAME SLANTED



DECO



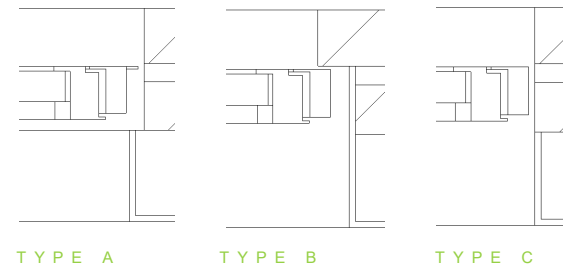
RENAISSANCE

# DIMENSION PARAMETERS

## Building Connections Type A-B-C

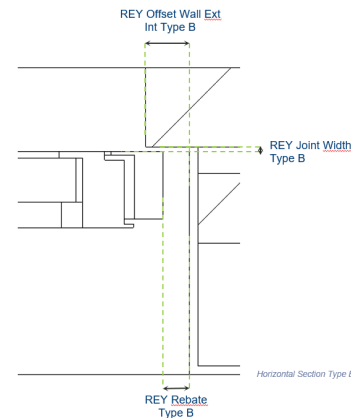
Building connections differ between countries. Reynaers BIM models include parametrical building connection information. For the convenience of the user we have predefined three types of connections (Type A, B, C) most commonly used worldwide.

- REY Building Connection Type A: Opening wall exterior > Opening wall interior
- REY Building Connection Type B: Opening wall exterior < Opening wall interior
- REY Building Connection Type C: Opening wall exterior = Opening wall interior



## Parameters for Building Connections:

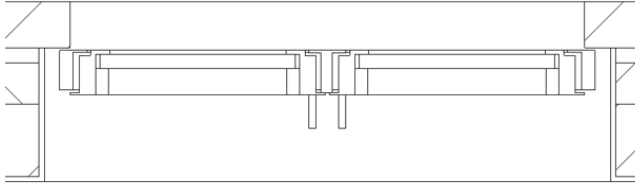
- REY Rebate: Distance between window and outside wall
- REY Offset Wall Ext Int: Distance between inside- and outside wall
- REY Joint Width: Distance between the inside of the outside wall and the front of the window profile



# DIMENSIONS PARAMETERS

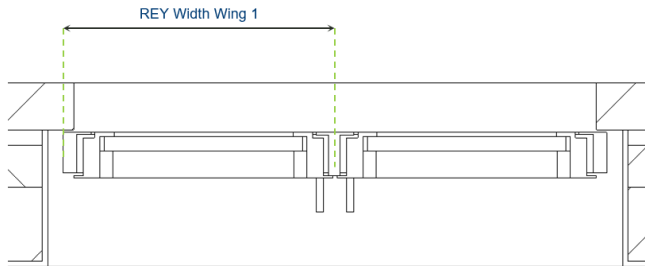
## Parameters Double Vent

- REY Double Casement Window



DOUBLE CASEMENT

- REY Width Wing 1: It is possible to make the window asymmetric.



Horizontal Section Type B  
Double Casement Window

# DIMENSION PARAMETERS

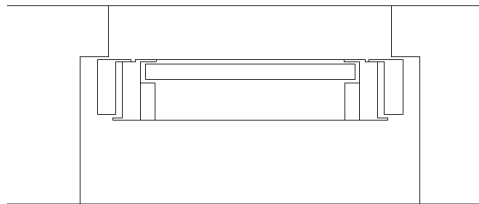
## Other Parameters

- REY Panel Thickness: Thickness of the panel/glass (possibilities in brackets)
- REY Fixation Bottom: Distance between bottom side of the window and top of the inner wall
- REY Joint Bottom: Distance between top of the inner wall and top of the outer wall
- REY Handle Height: The distance between the bottom of the window and the handle
- REY Shutter Roll Height: Height of the shutter roll (if activated)

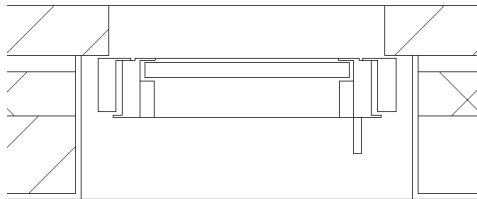
# DETAIL LEVELS

## 3 levels of detail

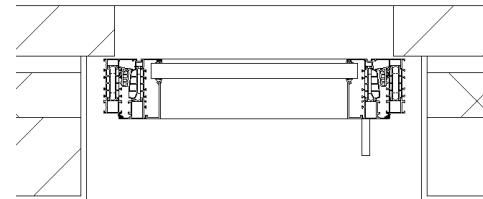
- Coarse
- Medium
- Fine



COARSE



MEDIUM



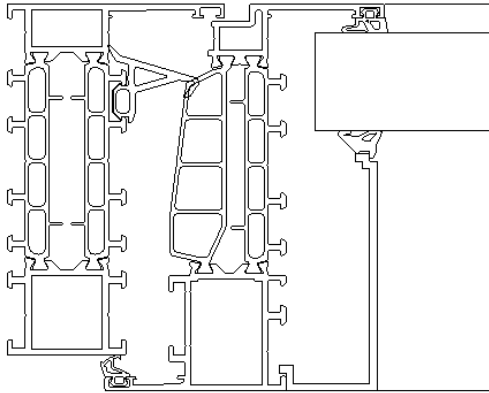
FINE



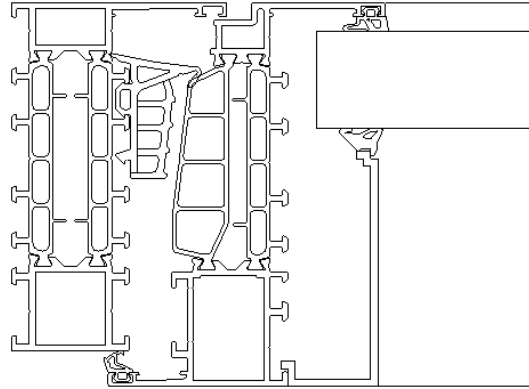
# ENERGY ANALYSIS PARAMETERS

## Gasket Variant

- Standard
- HI
- HI+



STANDARD



HI / HI+

# OTHER PARAMETERS

## Graphical parameters

REY Shutter: Option to add a shutter

REY Sill: Option to add a sill

REY Opening Direction: Option to choose between DIN R or DIN L and Tilt

## Material and Finishes

Materials for the profiles (inside and outside), the panel and the shutter roll can be chosen.

## Analytical Parameters

List of analytical parameters that can be used in calculations.

For example: REY Panel Surface Total, REY Panel Surface Visible, REY Uf, REY Rw, REY Air Tightness, REY Wind Load Resistance,

REY Water Tightness, REY Burglar Resistance, REY Fire Resistance,...



TOGETHER FOR BETTER